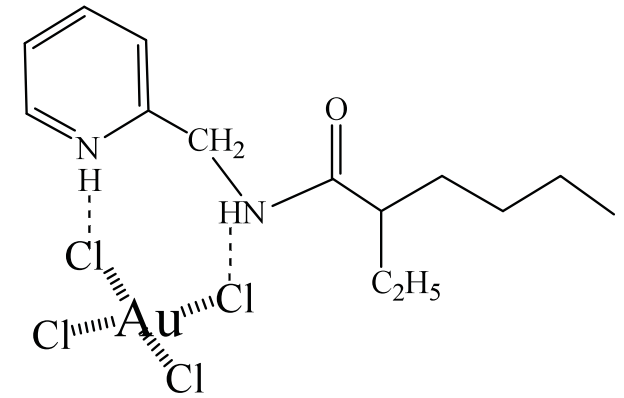
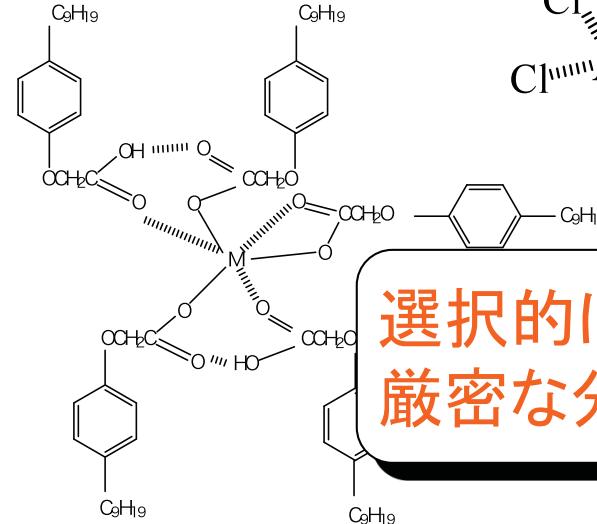


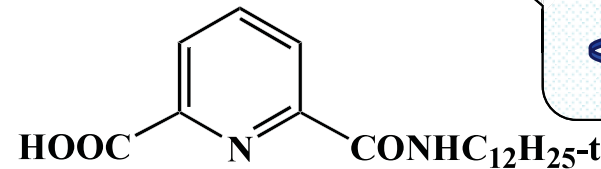
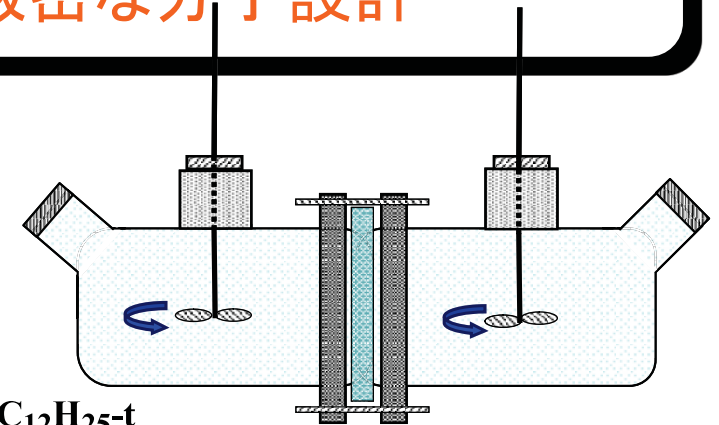
# レアメタル回収のための抽出剤開発



ゴミの山を  
→ 二次資源に！



選択的に金属回収する  
厳密な分子設計



$$J \text{ (mol m}^{-2}\text{s}^{-1}) = \frac{k_s k_m K_{ex} [(\overline{HR})_2]^2 [Cu^{2+}]}{K_{ex} k_m [(\overline{HR})_2]^2 + k_s [H^+]^2}$$